

TOTO LINK

The Smartest Network Device

www.totolink.net



S808G  1000Mbps
Up to 10/100/1000Mbps

8-Port Gigabit Ethernet Switch

➤ Overview

8-Port Gigabit Desktop Switch

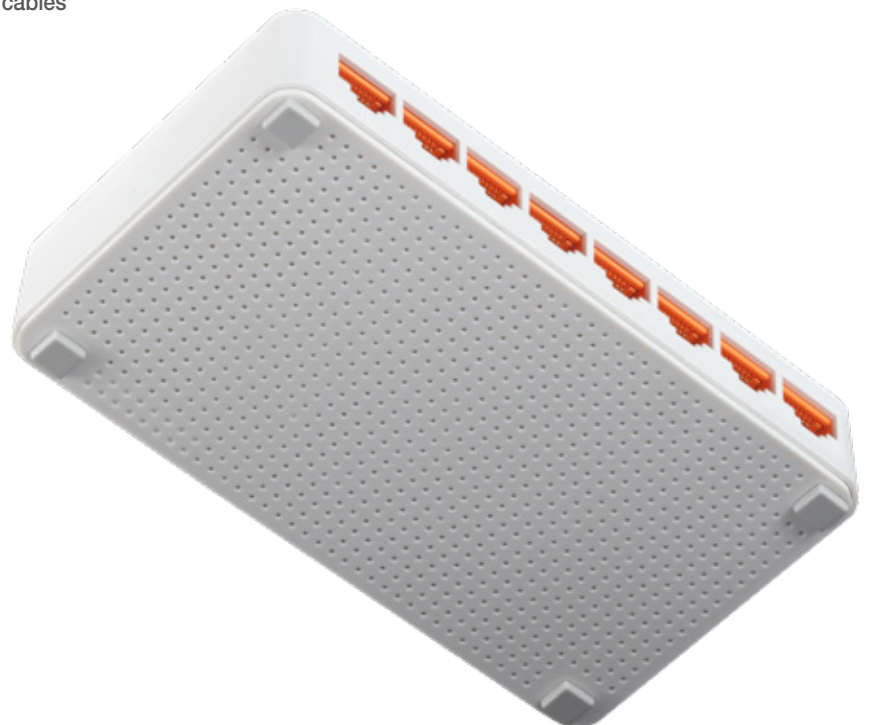
Model No. **S808G**

S808G is a Gigabit Desktop Switch that enables you to upgrade your network to gigabit Ethernet. With full gigabit ports and compact design, S808G not only increases the speed of your network server, but also make Gigabit to the desktop a reality. Generally, S808G is a high performance solution for your home or office network.



➤ Features

- 8 10/100/1000Mbps auto-negotiated RJ45 ports
- Supports IEEE 802.3x flow control for Full Duplex mode and backpressure for Half Duplex mode
- 4K entry MAC address table and automatic address learning
- Auto-MDI/MDIX eliminates the need for crossover cables
- Store- and-Forward Switching scheme
- Performs non-blocking full wired speed
- Supports Jumbo Frame (9KByte)
- Supports IGMP Snooping
- Supports Giga Lite to improve transfer rate for 4-wire UTP gigabit network



Specification

General

Standards	- IEEE 802.3, IEEE 802.3u, IEEE 802.3ab, IEEE 802.3x
Interface	- 8*10/100/1000Mbps auto-negotiation RJ-45 Ports (Auto MDI/MDIX)
Power Supply	- 9V DC/0.5A
LED	-1* Power, 8*LANs
Dimensions(L x W x H)	- 5.2 x 3.0 x 1.0 in. (132 x 75 x 25mm)
MAC Address Learning	- Auto-Learning, Auto-Aging
MAC Address Table	- 4K
Network Media	- 10BASE-T: UTP Cat 3, 4, 5 cable - 100BASE-TX/1000BASE-T: UTP Cat 5, 5e or above cable
Backup Bandwidth	- 16Gbps
Transmission Method	- Store-and-forward

Others

Package Contents	- S808G Desktop Switch *1 - Power Adapter - Quick Installation Guide *1
Environment	- Operating Temperature: 0℃~50℃ (32℉~122℉) - Storage Temperature: -40℃~70℃ (-40℉~158℉) - Operating Humidity: 5%~95% non-condensing - Storage Humidity: 5%~95% non-condensing

ZIONCOM (HK) TECHNOLOGY LIMITED

Copyright©ZIONCOM (HK) TECHNOLOGY CO., LTD. All Rights Reserved.

Headquarter & R&D Center

7/F, Unit D, 4 Building Shenzhen Software Industry Base, Xuefu Road,
Nanshan District, Shenzhen, Guangdong, China

Tel : +86-755-3686-1138 | FAX : +86-755-3686-1139

Factory

Building A1 & A2 Lantian Technology Park, Xinyu Road, Xinqiao Henggang Block,
Shajing Street, Baoan District, Shenzhen, Guangdong, China

Tel : +86-755-3686-1188 | FAX : +86-755-3686-1133

S808G

8-Port Gigabit Ethernet Switch