

TOTO LINK

The Smartest Network Device

Quick Installation Guide

AC600 USB Bluetooth Wireless Adapter

Model : A600UB

Copyright (C) TOTOLINK, All rights reserved.

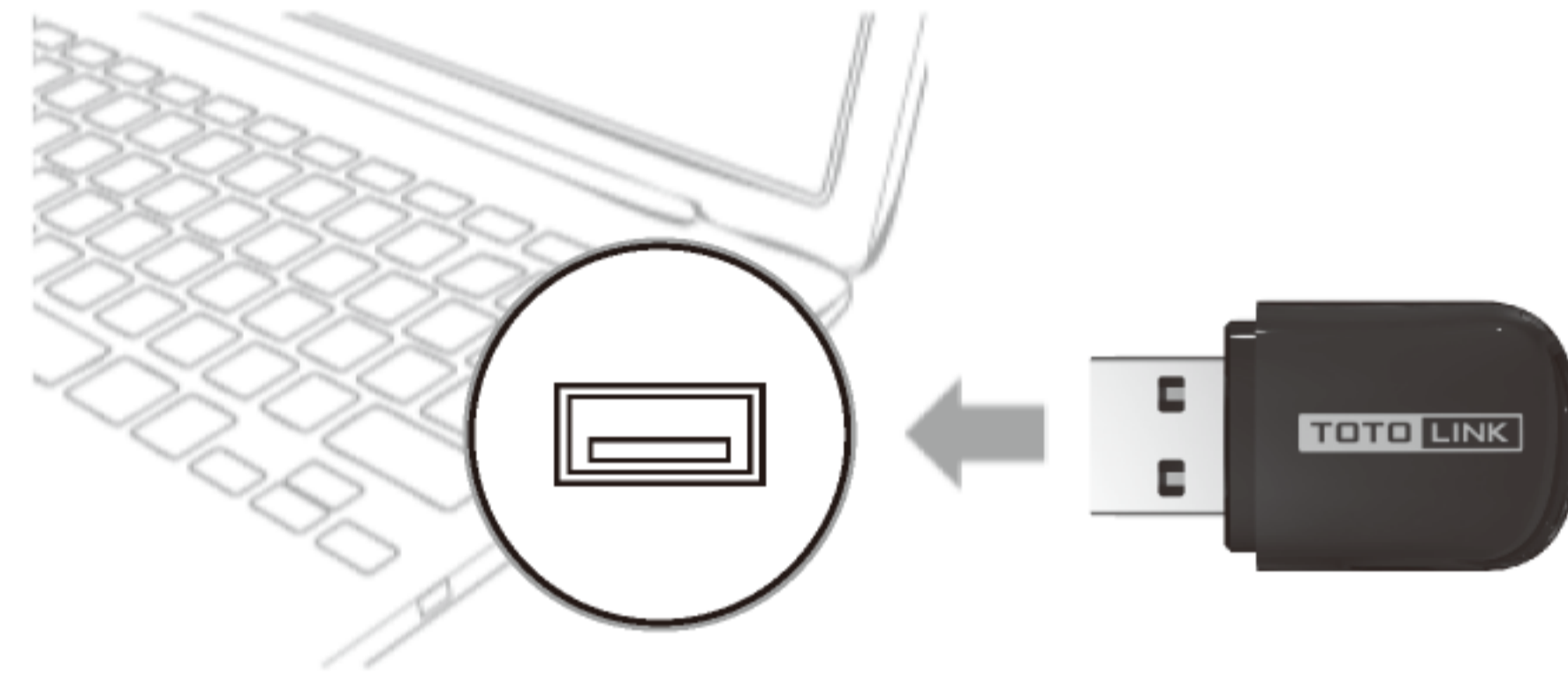
Information in this document is subject to change without prior notice.

For more information, please visit www.totolink.com.my

V1.000

1 Hardware Installation

Please plug A600UB into your computer USB port.



CD Drive (F:) TOTOLINK-A600UB
Select to choose what happens with this disc.
Your computer detects A600UB and pops up the window. Please click.

Note 1 : If the window does not pop up automatically, please click [This PC]. Then double-click [CD Drive TOTOLINK-A600UB] and "TOTOLINK_1.2.0.10.exe" to install the driver.

Note 2 : Please visit www.totolink.com.my or scan below QR code to download the driver for MacOS 10.6 ~ 10.14 and to install it manually.

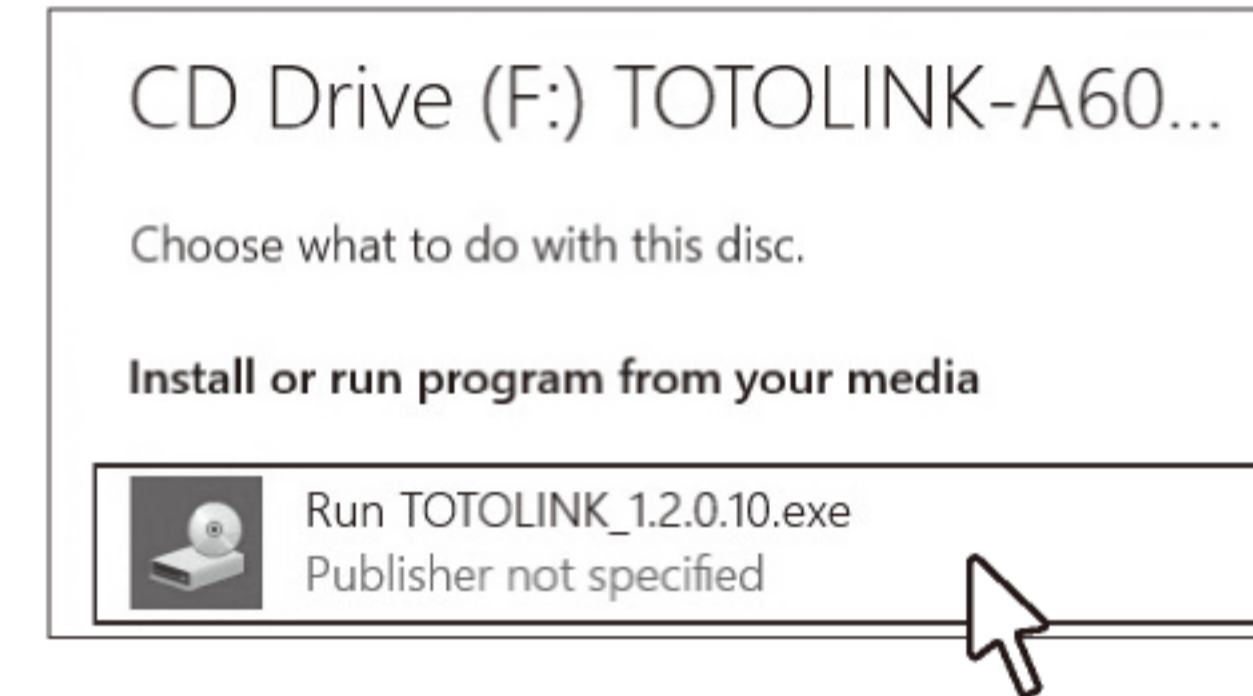
Note 3 : Wireless driver for Linux kernel is not supported.

Scan Me to Download MacOS Driver

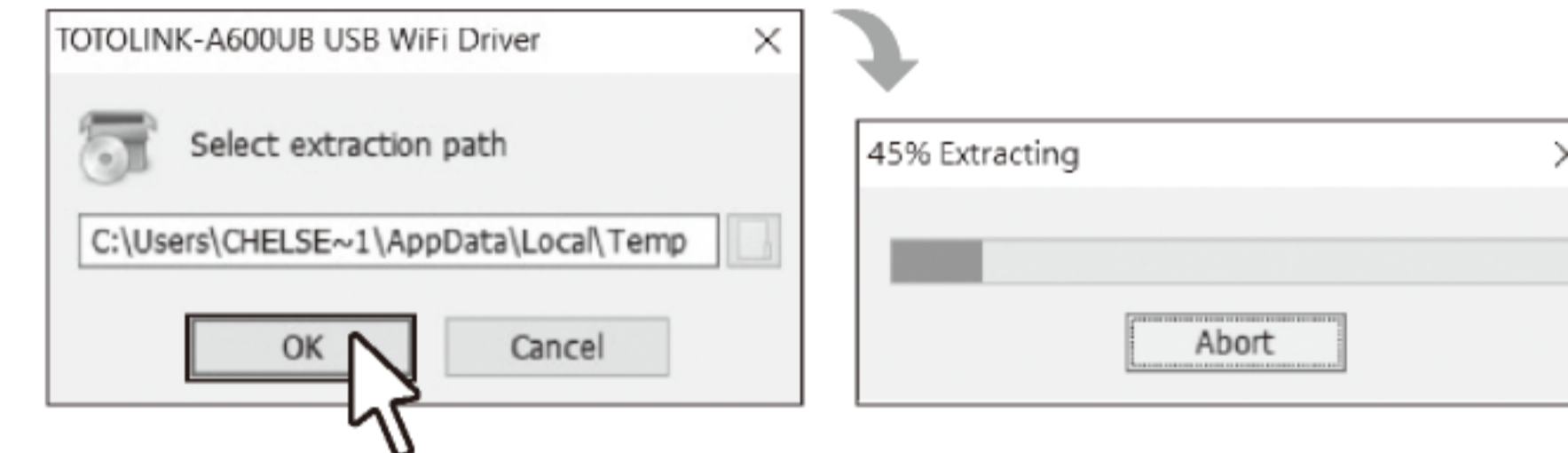


2 Wireless Driver Installation

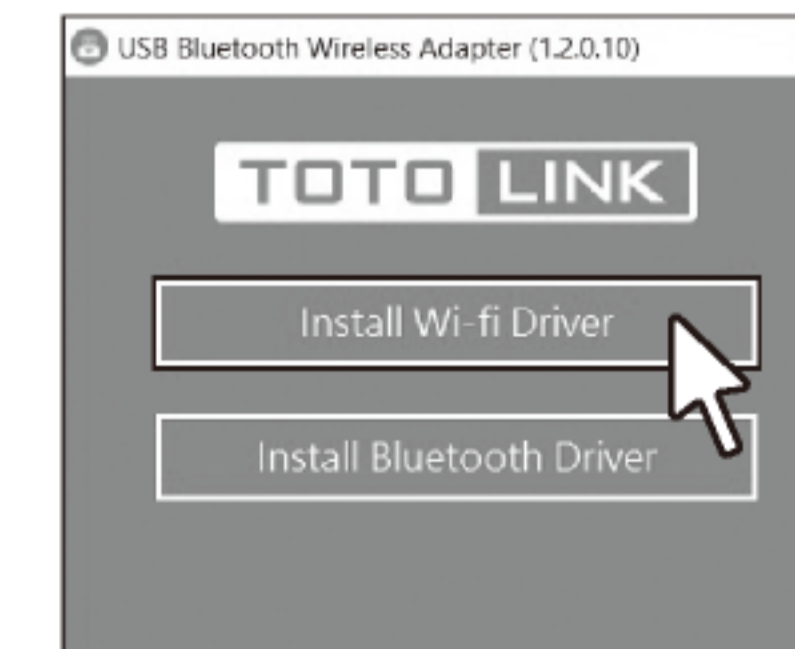
1 Enter the installation user interface, click [TOTOLINK_1.2.0.10.exe] to extract.



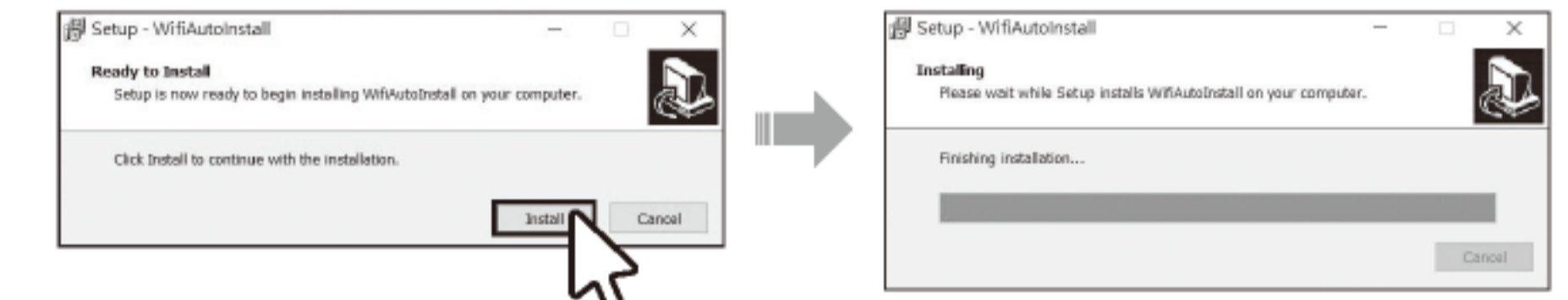
2 Select the extraction path, click [OK].



3 The window pops up automatically, click [Install Wi-fi Driver].



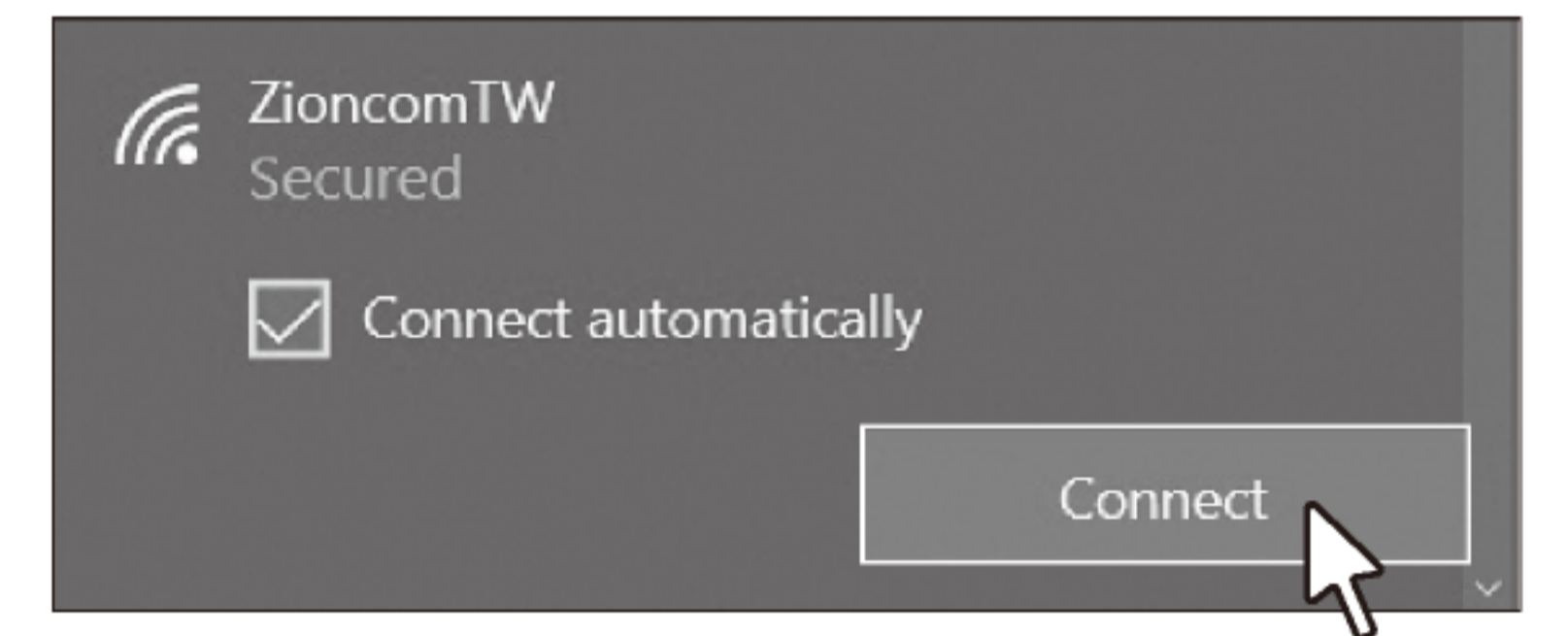
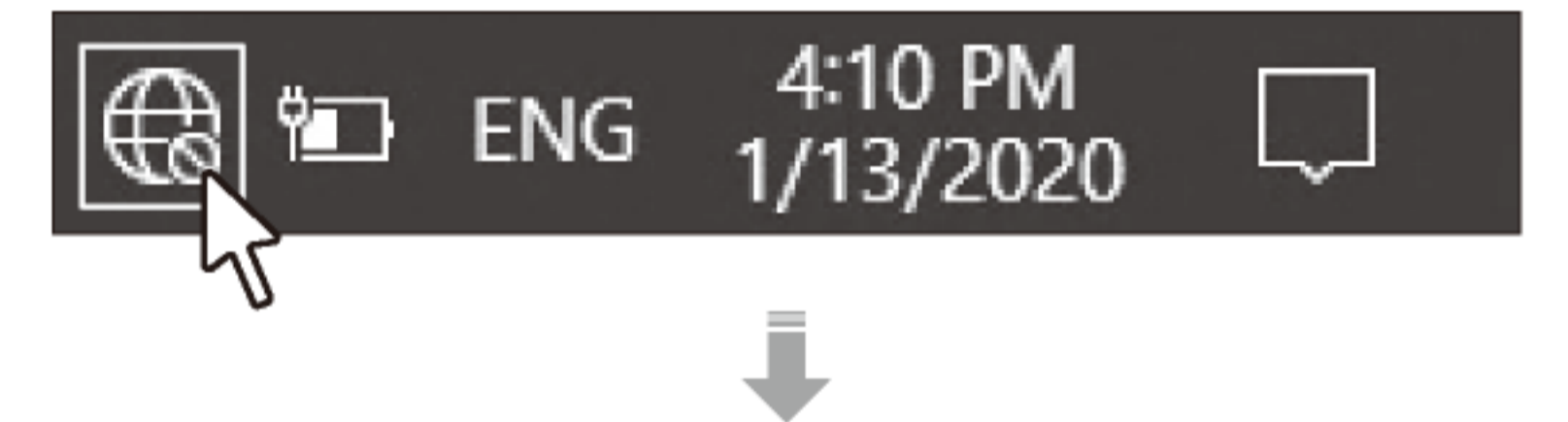
4 Click [Install].



Click [Install] to continue.

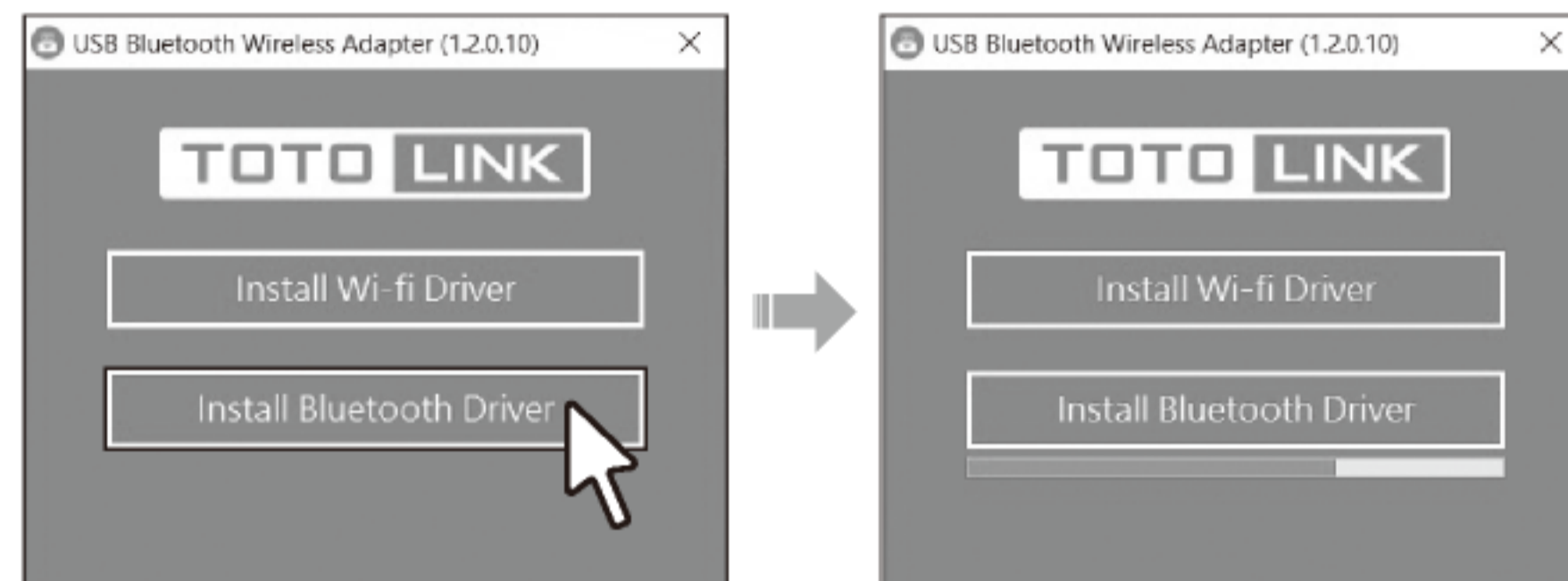
Proceed to Install driver and green bar running.

5 Click on the bottom right Internet icon of the desktop, select the Wi-fi name, click [Connect]. Then you can enjoy the Internet.



3 Bluetooth Driver Installation

1 Click [Install Bluetooth driver] on the window.

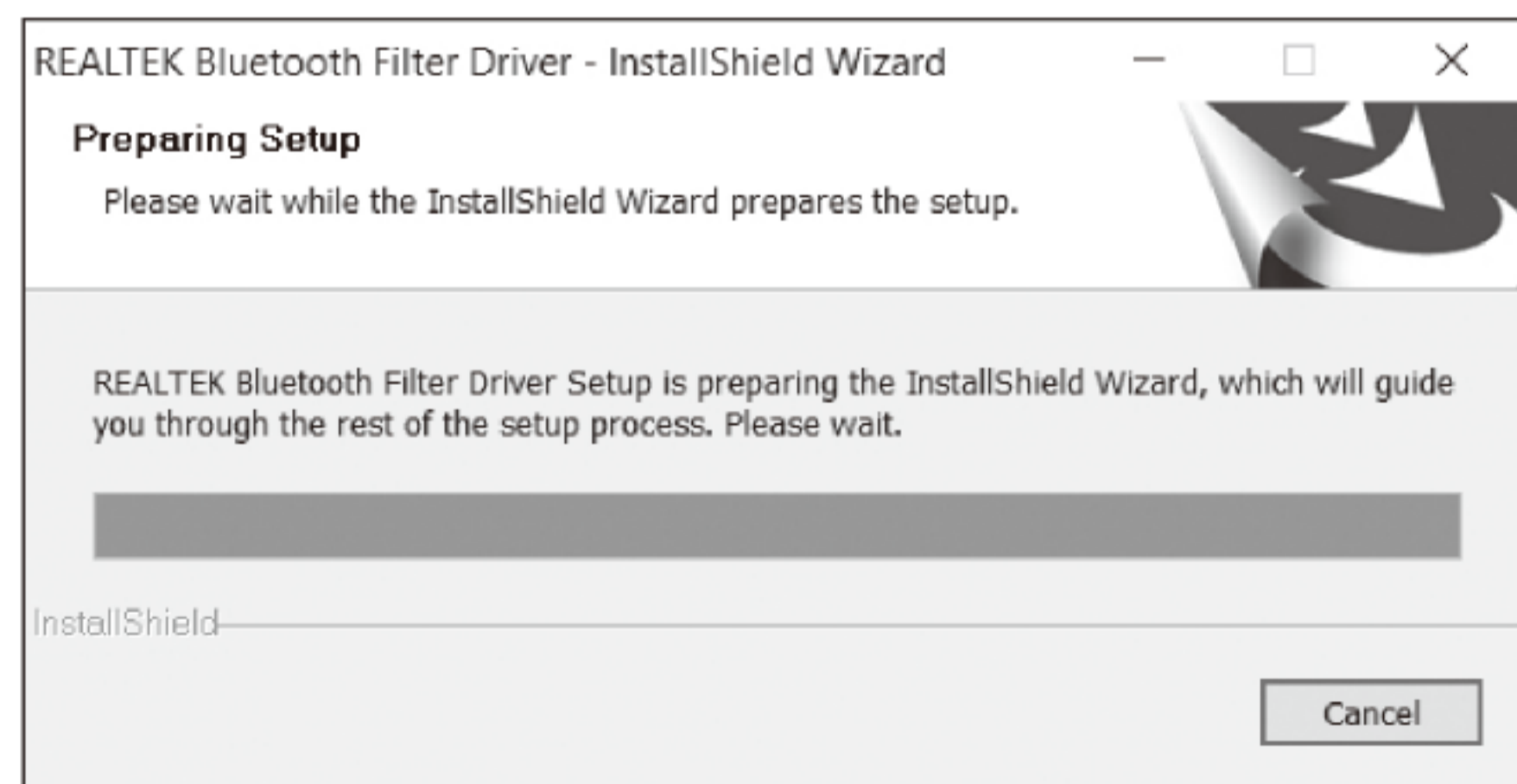


Note 1 : Make sure to connect to the Internet before installing Bluetooth driver.

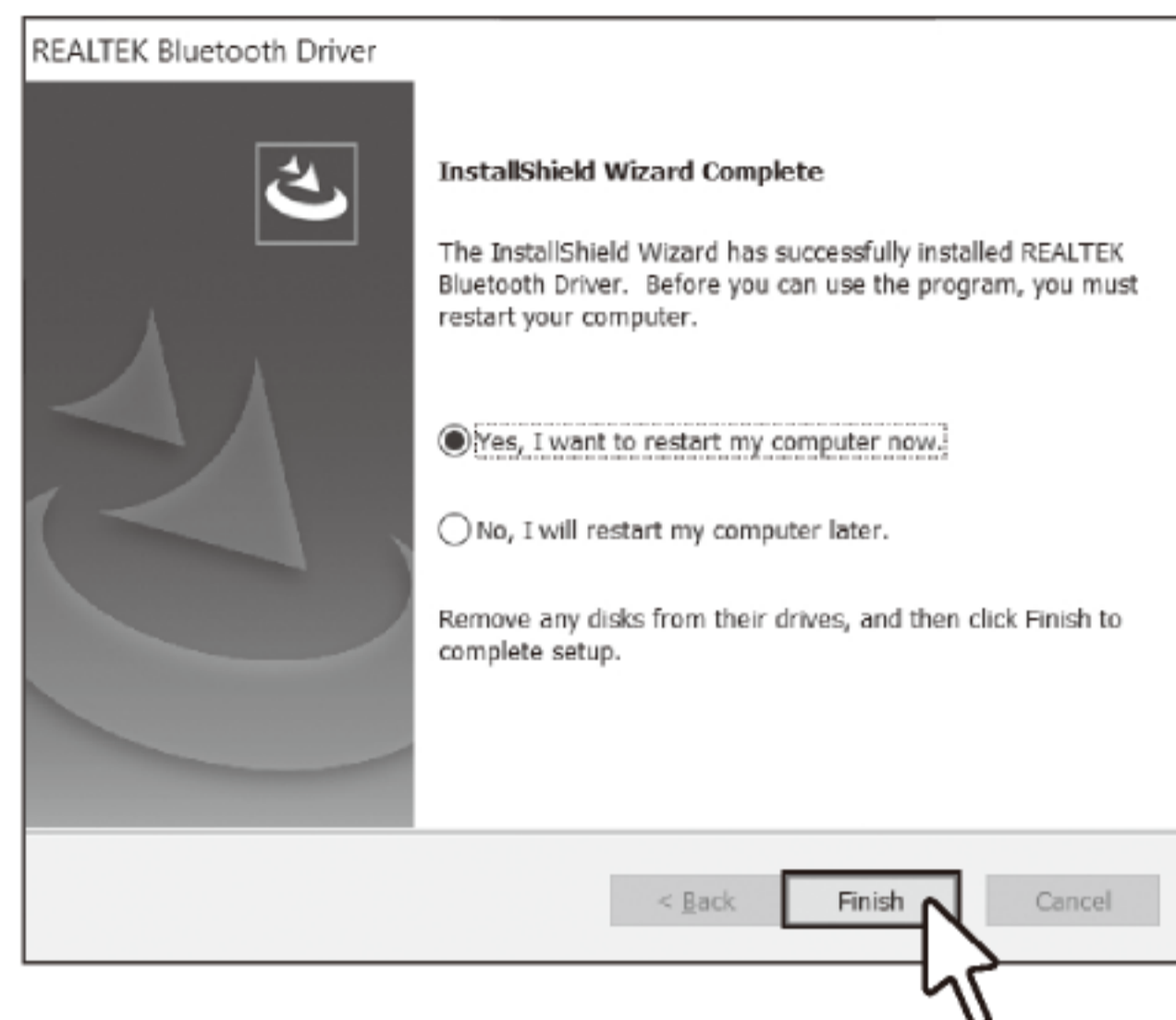
Note 2 : Please disable the built-in Bluetooth before installing Bluetooth driver. Refer to the question 1 of Part 4 to disable it.

Note 3 : It supports Bluetooth under Windows 10 / 8 / 8.1 / 7.

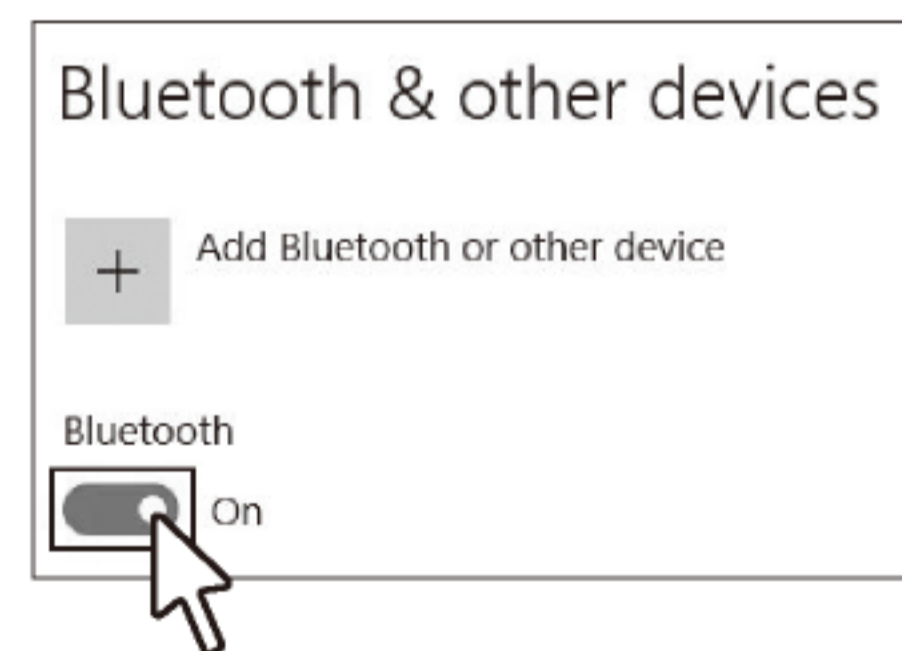
2 Installing...



3 Complete the installation, please reboot your computer.



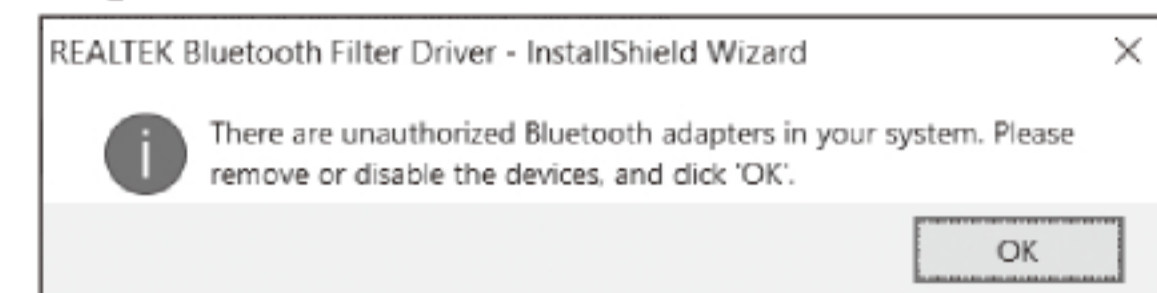
4 Enable Bluetooth in [Setting] after rebooting the computer, then you can use A600UB Bluetooth function.



4 Frequently Asked Questions

1 Error occurred while installing A600UB Bluetooth driver.

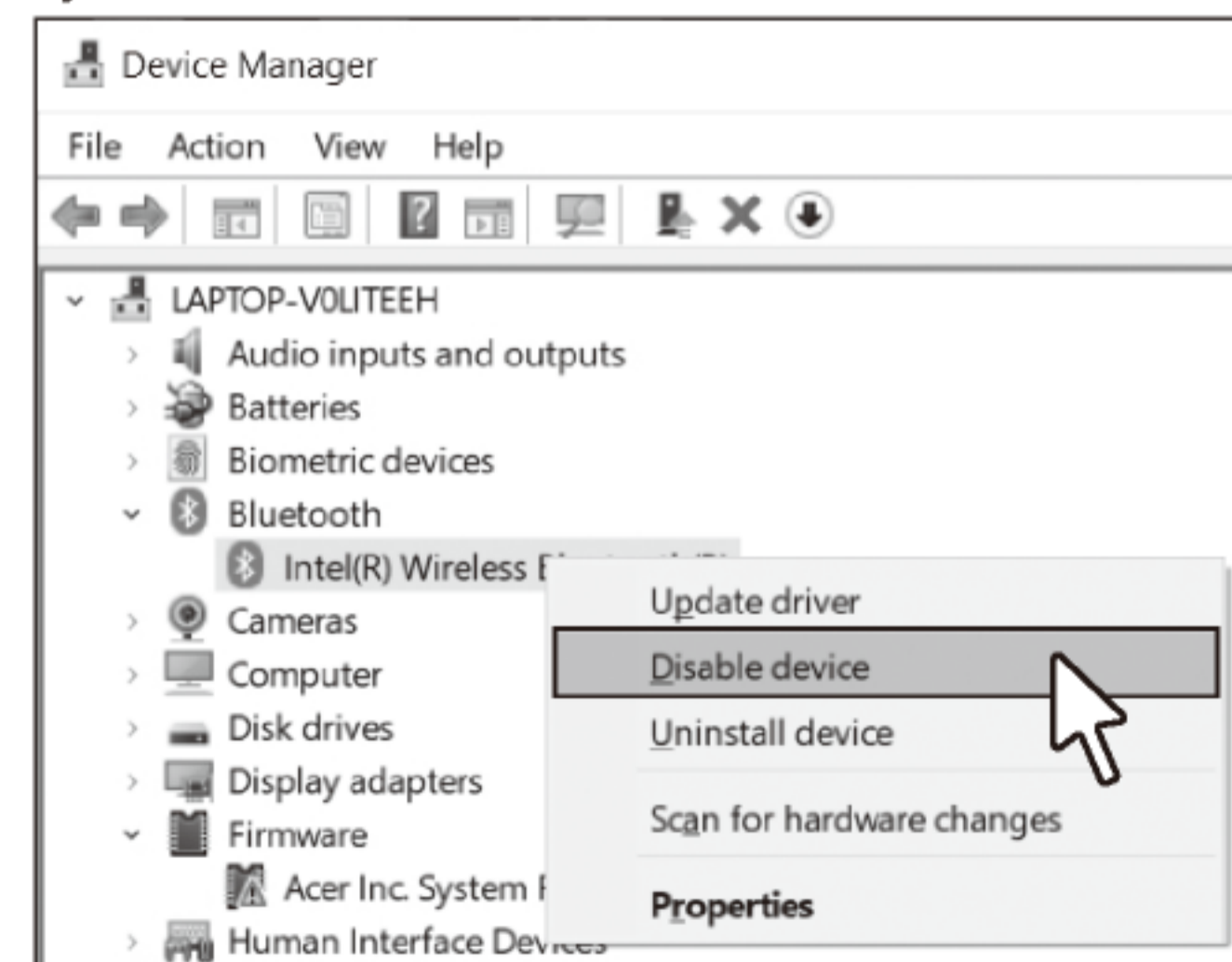
Windows OS drives only one Bluetooth dongle simultaneously. If your computer comes with built-in Bluetooth, it will pop up error message while installing A600UB Bluetooth driver.



1 Please disable built-in Bluetooth before installing A600UB Bluetooth driver. Kindly follow the procedures: Click [Control Panel], select [Device Manager] or type [Device Manager] to search via the search bar in lower left-hand of desktop.



2 Find your built-in Bluetooth device in [Bluetooth] under [Device Manager]. Press right button of mouse to click [Disable device]. Now you can continue to install A600UB Bluetooth driver.



2 After wireless driver has been installed, I still cannot use A600UB Wi-Fi function. And my computer detects it as a pen drive. How do I solve this issue?

1 Click [This PC].
2 Press right button of mouse on [CD Drive] to click [Eject].
Now You can use A600UB Wi-Fi function without any problems.

